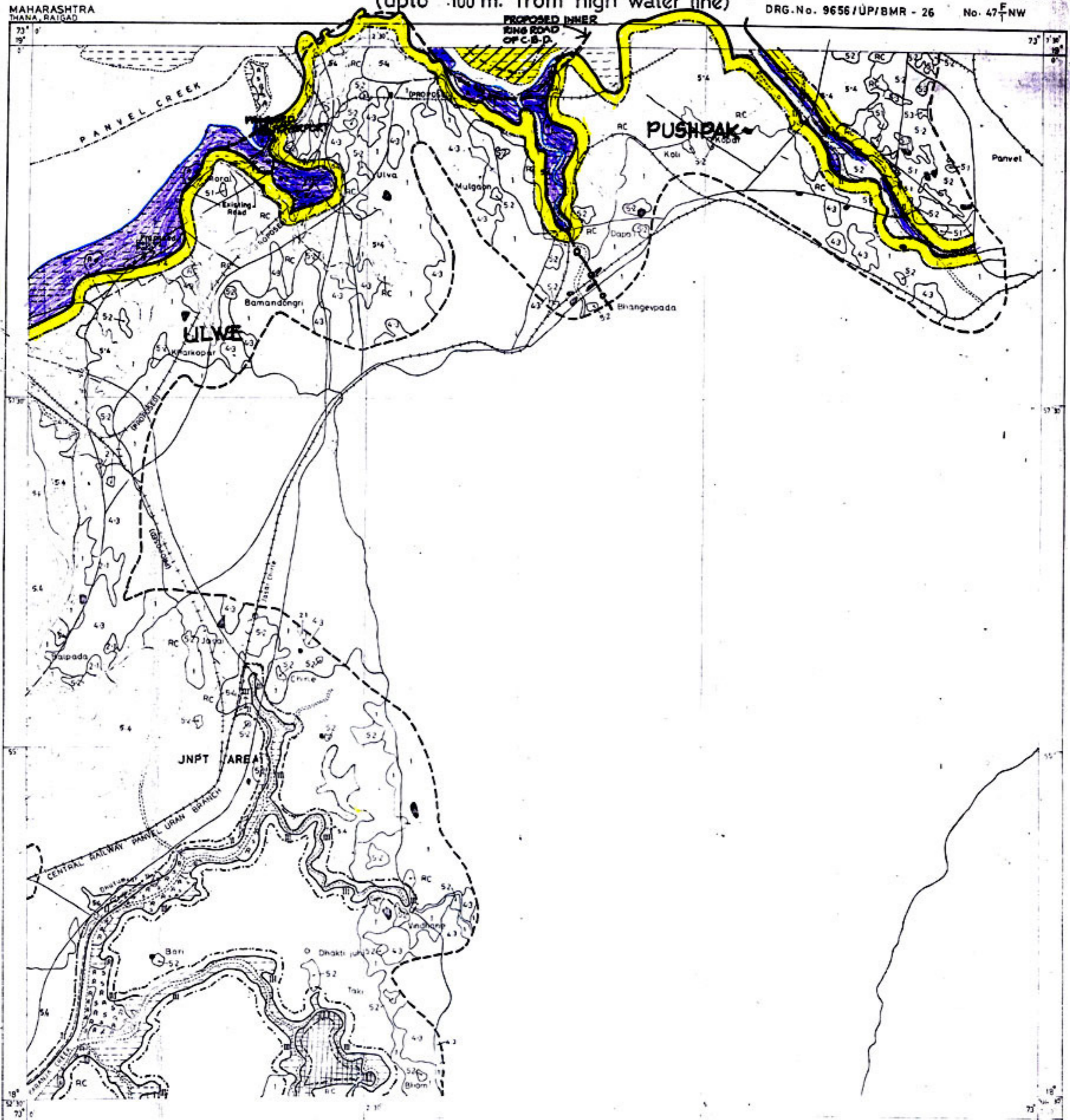
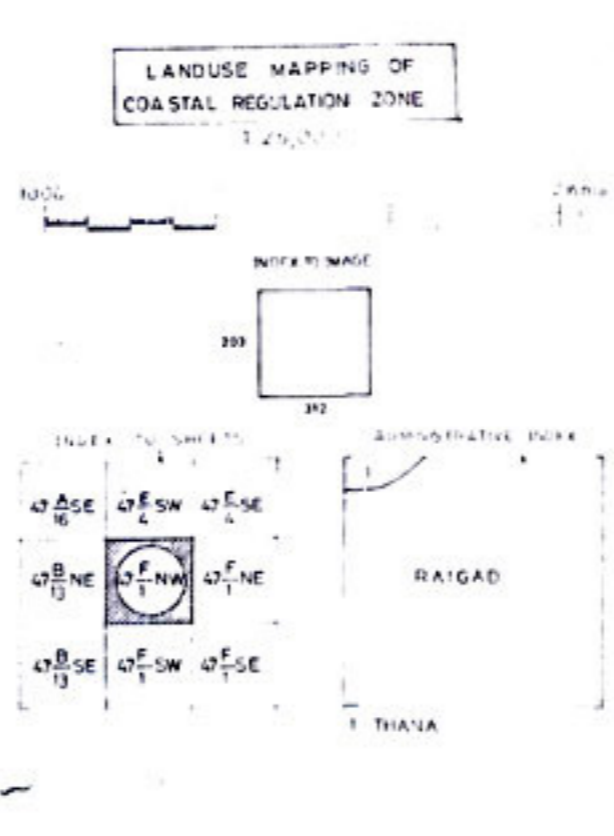


COASTAL LANDUSE MAP (upto 100 m. from high water line)

FOR OFFICIAL USE ONLY
DRG.No. 9656/UP/BMR - 26 No. 47^FNW



| LEGEND | |
|---|----------|
| Agricultural land | [Symbol] |
| Forest (non-tidal) | [Symbol] |
| Wetland | [Symbol] |
| Estuary | [Symbol] |
| Lagoon | [Symbol] |
| Creek | [Symbol] |
| Bay | [Symbol] |
| Tidalflat / mudflat | [Symbol] |
| Sand / beach / spit / bar | [Symbol] |
| Rocky coast | [Symbol] |
| Mangrove forest | [Symbol] |
| Dense | [Symbol] |
| Sparse | [Symbol] |
| Salt-marsh / Marsh vegetation | [Symbol] |
| Other vegetation (scrub/grass/algae/seaweeds) | [Symbol] |
| Barren land | [Symbol] |
| Sandy area/dunes | [Symbol] |
| Mining areas/dumps | [Symbol] |
| Others (rock outcrops/gullied/eroded/badland) | [Symbol] |



| LEGEND | |
|---|----------|
| Built-up land | [Symbol] |
| Habitation | [Symbol] |
| Habitation with vegetation | [Symbol] |
| Open/vacant land | [Symbol] |
| Open/vacant land in Transition mostly unaffected by HTL | [Symbol] |
| Roads (EXISTING) | [Symbol] |
| Roads (PROPOSED) | [Symbol] |
| Railways | [Symbol] |
| Harbour/jetties | [Symbol] |
| Airport | [Symbol] |
| Waterways | [Symbol] |
| Proposed roads | [Symbol] |
| Other features | [Symbol] |
| Reclaimed area | [Symbol] |
| Salt pans | [Symbol] |
| Aquaculture ponds | [Symbol] |
| Ponds/lakes | [Symbol] |
| Rivers/streams | [Symbol] |
| Drains/outfalls/affluents | [Symbol] |
| Seawall | [Symbol] |
| Embankment | [Symbol] |
| High waterline | [Symbol] |
| Low waterline | [Symbol] |
| District Boundary | [Symbol] |
| State Boundary | [Symbol] |
| Coastal Regime | [Symbol] |
| Coastal Regulation Zone (CRZ) Boundary | [Symbol] |
| CRZ-I | [Symbol] |
| CRZ-II | [Symbol] |
| CRZ-III | [Symbol] |

SOURCE: BASE MAP PREPARED BY CSIR, IIT, MUMBAI & SAC (SRM) AHMEDABAD BASED ON SPOT SATELLITE DATA - ROWING 30-32 / 23.9.92 (A 50:1 TOPOGRAPHICAL MAP (1967-75) SCALE 1:50,000, REVIEWED AND UPDATED THROUGH SAMPLE GROUND INSPECTION BY CERSI/PVT., LTD., NEW DELHI.

This map accompanies the letter No. MCZMA 2008/CR 16/TC-II dated 22nd May 2008

TRUE COPY



Railways
Senior Planner (W&DP) Planning (DP) Section
C&C&LIS, CIDCO Bhavan,
LEO Delpur, Navi Mumbai.



D. V. SHEKDAR
Chief Architect and Planner
CIDCO BHAVAN,
CIDCO Delpur, Navi Mumbai.

© PROPOSED HOVERPORT.
SEPARATELY APPROACHING
MOEF THRU GOVT OF
MAHARASHTRA FOR RECONSIDERATION
OF RECLASSIFICATION TO CRZ-II